

OMP-160 175 bar PN: 682030 Std. drum 682169 Long drum

Introduction

► Feature

Line pull (1 st layer):	9,070 kg / 20,000 lb
Line speed (1 st layer):	7.1 mpm at 60 l / min
Operation pressure:	150 bar (2,175 psi) 175 bar (2,540 psi)
Brake:	Multi-disc brake and counterbalance valve providing full 100% braking
Clutch (free spool):	output shaft disengaged
Recommended wire rope:	14 mm x 43 m for Std. drum 14 mm x 80 m for Long drum 1,960 N/mm ² breaking strength of 137 kN is required for SAE ratings 16 mm x 30 m for Std. drum 16 mm x 55 m for Long drum 1,960 N/mm ² breaking strength of 179 kN is required for EN-14492-1 ratings
Hydraulic system:	PTO/power take off unit driven pump

► Unpacking

• Winch assembly.....	1pc
• Roller fairlead.....	1pc
• Counterbalance valve.....	1pc
• Cable tensioner.....	1pc

► Read this manual carefully

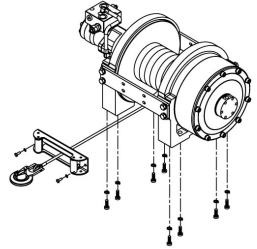
- Carefully read and understand this manual before operating the winch.
- Careless winch operation may result in personal injury, danger to others and or damage to property

► Installation

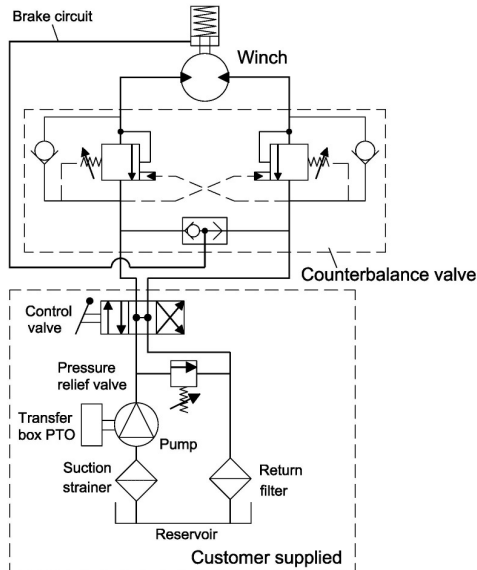
Before using the winch ensure all electrical component components are in good condition and all connections are sound.

► Mounting

- Winch shall be mounted on a flat and hard surface.
- Winch should be mounted as close to center and as perpendicular as possible to the direction of the load
- Wire rope shall be in an under-wound orientation
- Eight (8) M16 x 40, 12.9 grade high tensile steel bolts must be used in order to sustain the loads imposed on the winch.
- Two (2) M10 X 25, 12.9 grade high tensile steel bolts must be used to fasten the roller fairlead to the mounting channel.
- It is always preferred to use both tie bars in the final installed configuration.



► Hydraulic System



(Powered by PTO / power take off unit driven pump)

The installation of the counterbalance valve supplied is required for 100% braking

Warning

- The winch is not to be used for transporting or lifting of personnel.
- The rated line pull shown is based on the first layer of rope on the drum.
- The rope shall remain with at least 5 wraps on the drum at all times

Warranty

Comeup Industries Inc. takes the responsibility for all parts and components to be free from defects in materials and workmanship appearing under normal use for one year from the date of purchase.

Parts List

Item No.	Description	Part No.	Qty
1	Hydraulic motor kit, OMP-160	882186	1
	Hydraulic motor kit, OMR-160	882181	
2	Multi-disc brake kit	881971	1
3	Motor support rack	882142	1
4	Motor coupling kit	881973	1
5	Drum bushing	880187	2
6	Drum kit, Std. drum	882143	1
	Drum kit, Long drum	882182	
7-1	Tie bar kit, Std. drum	881975	2
	Tie bar kit, Long drum	882189	
8	Gearbox support rack kit	882144	1
9	2 nd stage carrier	882145	1
10	1 st stage carrier	882146	1
11	1 st shaft kit, Std. drum	882147	1
	1 st shaft kit, Long drum	882183	
12	1 st gear	882052	1
13	1 st & 2 nd ring gear kit	882148	1
14	Gearbox rear cover kit	882149	1
15	Air inlet cover kit	881982	1
16	Cable tensioner, Std. drum	881983	1
	Cable tensioner, Long drum	882195	
17	Roller fairlead, Std. drum	880160	1
	Roller fairlead, Long drum	882238	

Winch Assembly

682030

682169

